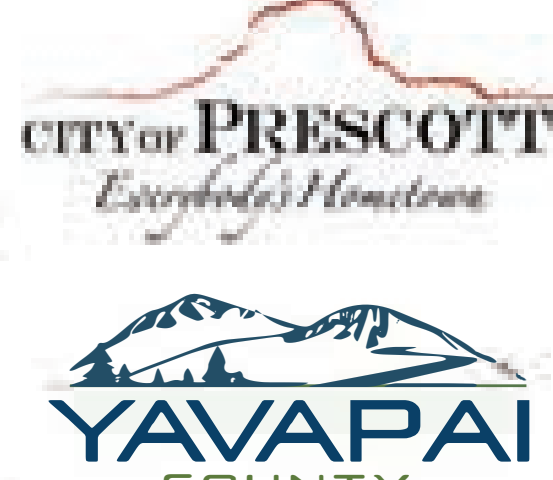


2024 Granite Creek Cleanup

April 20th, 2024

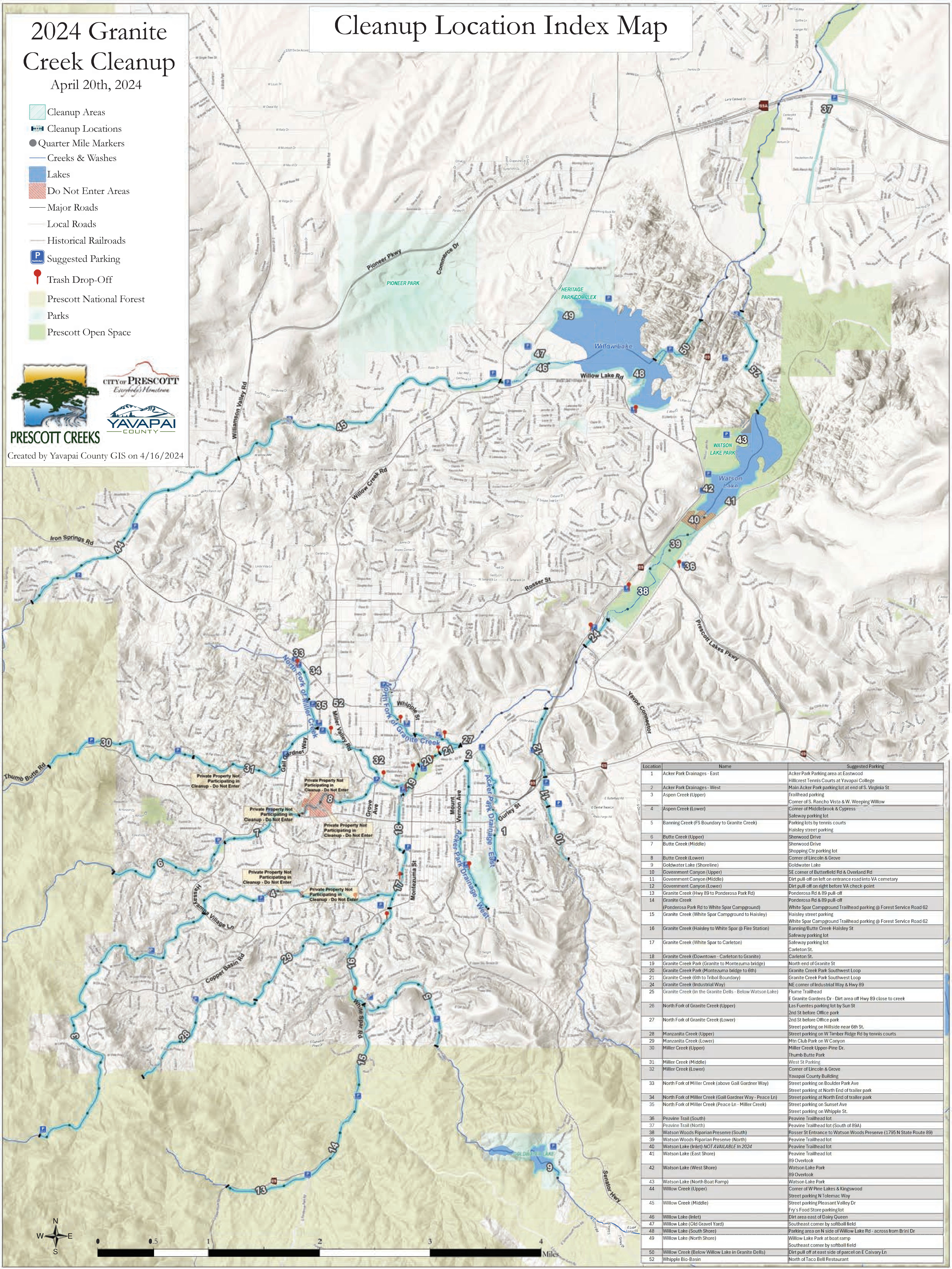
-  Cleanup Areas
-  Cleanup Locations
-  Quarter Mile Markers
-  Creeks & Washes
-  Lakes
-  Do Not Enter Areas
-  Major Roads
-  Local Roads
-  Historical Railroads
-  Suggested Parking
-  Trash Drop-Off
-  Prescott National Forest
-  Parks
-  Prescott Open Space



PRESCOTT CREEKS

Created by Yavapai County GIS on 4/16/2024

Cleanup Location Index Map



Location	Name	Suggested Parking
1	Acker Park Drainages - East	Acker Park Parking area at Eastwood Hillcrest Tennis Courts at Yavapai College
2	Acker Park Drainages - West	Main Acker Park parking lot at end of S. Virginia St
3	Aspen Creek (Upper)	Trailhead parking
4	Aspen Creek (Lower)	Corner of S. Rancho Vista & W. Weeping Willow
5	Banning Creek (FS Boundary to Granite Creek)	Corner of Middlebrook & Cypress
6	Butte Creek (Upper)	Safeway parking lot
7	Butte Creek (Middle)	Parking lots by tennis courts
8	Butte Creek (Lower)	Haisley street parking
9	Goldwater Lake (Shoreline)	Sherwood Drive
10	Government Canyon (Upper)	Shopping Ctr parking lot
11	Government Canyon (Middle)	Corner of Lincoln & Grove
12	Government Canyon (Lower)	Goldwater Lake
13	Granite Creek (Hwy 89 to Ponderosa Park Rd)	SE corner of Butterfield Rd & Overland Rd
14	Granite Creek (Ponderosa Park Rd to White Spar Campground)	Dirt pull off on left on entrance road into VA cemetery
15	Granite Creek (White Spar Campground to Haisley)	Dirt pull off on right before VA check-point
16	Granite Creek (Haisley to White Spar @ Fire Station)	Ponderosa Rd & 89 pull-off
17	Granite Creek (White Spar to Carleton)	Ponderosa Rd & 89 pull-off
18	Granite Creek (Downtown - Carleton to Granite)	White Spar Campground Trailhead parking @ Forest Service Road 62
19	Granite Creek Park (Granite to Montezuma bridge)	Haisley street parking
20	Granite Creek Park (Montezuma bridge to 6th)	White Spar Campground Trailhead parking @ Forest Service Road 62
21	Granite Creek (6th to Inbal Boundary)	Haisley street parking
22	Granite Creek (Industrial Way)	White Spar Campground Trailhead parking @ Forest Service Road 62
23	Granite Creek (In the Granite Dells - Below Watson Lake)	NE corner of Industrial Way & Hwy 89
24	Granite Creek (In the Granite Dells - Below Watson Lake)	Flume Trailhead
25	North Fork of Granite Creek (Upper)	E Granite Gardens Dr - Dirt area off Hwy 89 close to creek
26	North Fork of Granite Creek (Lower)	Las Fuentes parking lot by Sun St
27	Manzanita Creek (Upper)	2nd St before Office park
28	Manzanita Creek (Lower)	Street parking on Hillside near 6th St.
29	Miller Creek (Upper)	Street parking on W Timber Ridge Rd by tennis courts
30	Miller Creek (Middle)	Mtn Club Park on W Canyon
31	Miller Creek (Lower)	Miller Creek Upper-Pine Dr.
32	North Fork of Miller Creek (above Gail Gardner Way)	Thumb Butte Park
33	North Fork of Miller Creek (Gail Gardner Way - Peace Ln)	West St Parking
34	North Fork of Miller Creek (Peace Ln - Miller Creek)	Corner of Lincoln & Grove
35	Peavine Trail (North)	Yavapai County Building
36	Peavine Trail (South)	Street parking on Boulder Park Ave
37	Watson Woods Riparian Preserve (South)	Street parking at North End of trailer park
38	Watson Woods Riparian Preserve (North)	Street parking at North End of trailer park
39	Watson Lake (Inlet) NOT AVAILABLE in 2024	Street parking on Sunset Ave
40	Watson Lake (East Shore)	Street parking on Whipple St.
41	Watson Lake (West Shore)	Peavine Trailhead lot
42	Watson Lake (North Boat Ramp)	Peavine Trailhead lot
43	Willow Creek (Upper)	89 Overlook
44	Willow Creek (Middle)	89 Overlook
45	Willow Creek (Inlet)	Watson Lake Park
46	Willow Lake (Old Gravel Yard)	89 Overlook
47	Willow Lake (South Shore)	Watson Lake Park
48	Willow Lake (North Shore)	Corner of W Pine Lakes & Kingswood
49	Willow Lake (Inlet)	Street parking N Tolemac Way
50	Whipple Bio-Basin	Street parking Pleasant Valley Dr
51		Fry's Food Store parking lot
52		Dirt area east of Dairy Queen