

# 2023 Granite Creek Cleanup

April 22nd, 2023

## Hydrology

Cleanup Locations

Creeks & Washes

Lakes

Quarter Mile Markers

Transportation

Major Roads

Local Roads

No Trespassing

Public Land Use

Prescott National Forest

Parks

Prescott Open Space

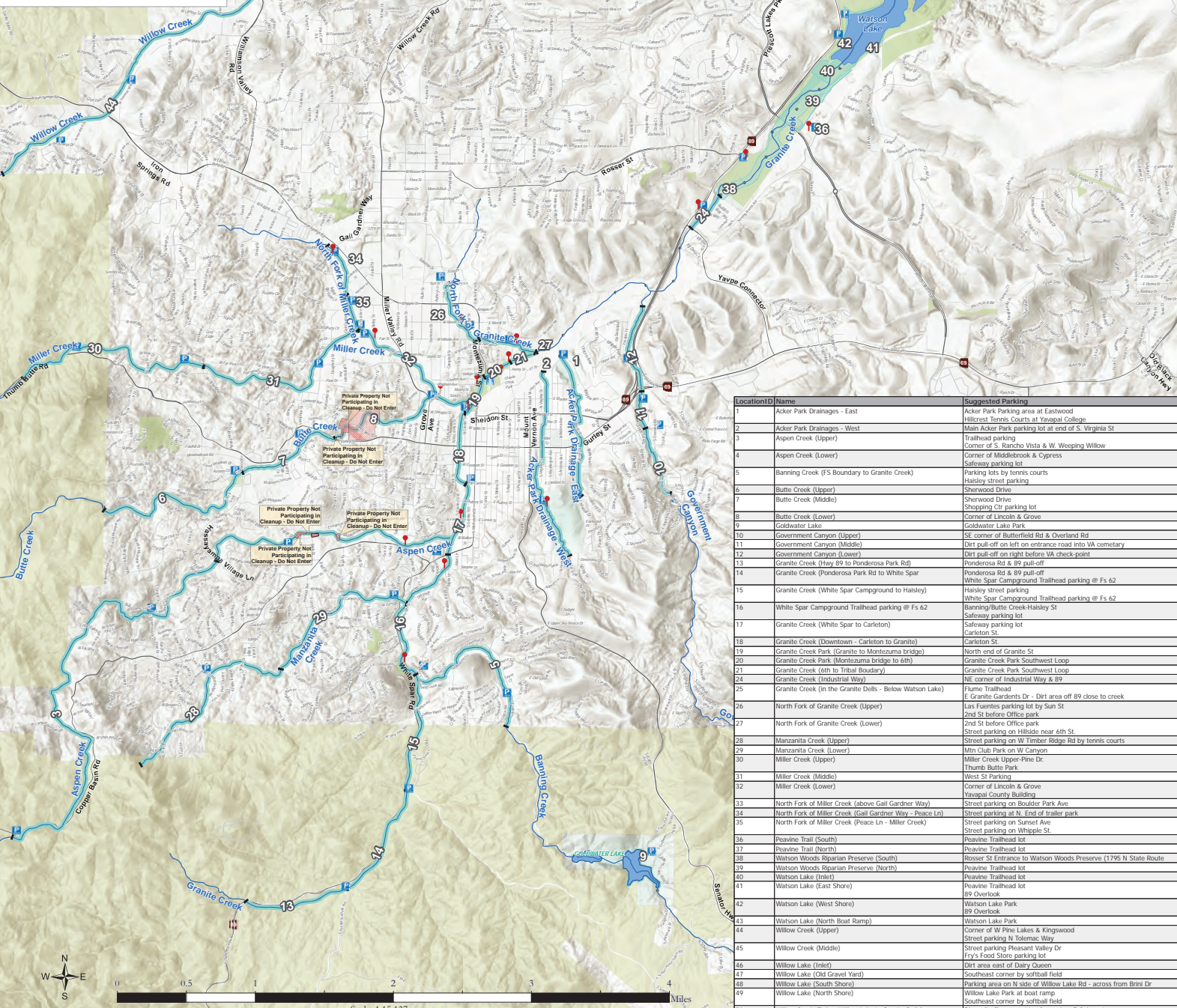
Suggested Parking

Trash Drop-Off



Created by Yavapai County GIS on 4/13/2023

## Cleanup Location Index Map



LocationID	Name	Suggested Parking
1	Acker Park Drainages - East	Acker Park Parking area at Eastwood
2	Acker Park Drainages - West	Hilbert Tennis Courts at Yavapai College
3	Aspen Creek (Upper)	Main Acker Park parking lot at end of S. Virginia St
4	Aspen Creek (Lower)	Trailhead parking Corner of S. Rancho Vista & W. Weeping Willow
5	Banning Creek (FS Boundary to Granite Creek)	Corner of Middlebrook & Cypress Sawley parking lot
6	Butte Creek (Upper)	Parking lots by tennis courts Haisley street parking
7	Butte Creek (Middle)	Sherwood Drive
8	Butte Creek (Lower)	Sherwood Drive
9	Goldwater Lake	Shopping Ctr parking lot Corner of Lincoln & Grove
10	Government Canyon (Upper)	Goldwater Lake Park
11	Government Canyon (Middle)	SE corner of Butterfield Rd & Overland Rd
12	Government Canyon (Lower)	Dirt pull-off on left on entrance road into VA cemetery
13	Granite Creek (Near 89 to Ponderosa Park Rd)	Dirt pull-off on right before VA check-point
14	Granite Creek (Ponderosa Park Rd to White Spar)	Ponderosa Rd & 89 pull-off White Spar Campground Trailhead parking @ Fs 62
15	Granite Creek (White Spar Campground to Haisley)	Haisley street parking White Spar Campground Trailhead parking @ Fs 62
16	White Spar Campground Trailhead parking @ Fs 62	Banning/Butte Creek-Haisley St Sawley parking lot
17	Granite Creek (White Spar to Carleton)	Carleton St
18	Granite Creek (Downtown - Carleton to Granite)	North end of Granite St
19	Granite Creek Park (Granite to Montezuma bridge)	Granite Creek Park Southwest Loop
20	Granite Creek Park (Montezuma bridge to 6th)	Granite Creek Park Southwest Loop
21	Granite Creek (6th to Tribal Roadway)	NE corner of Industrial Way & 89
22	Granite Creek (Industrial Way)	Fume Trailhead
23	Granite Creek (In the Granite Dells - Below Watson Lake)	E Granite Gardens Dr - Dirt area off 89 close to creek
24	North Fork of Granite Creek (Upper)	Las Fuentes parking lot by Sun St 2nd St before Office park
25	North Fork of Granite Creek (Lower)	Street parking on Hillside near 6th St
26	Manzanita Creek (Upper)	Street parking on W Timber Ridge Rd by tennis courts
27	Manzanita Creek (Lower)	Mtn Club Park on W Canyon
28	Miller Creek (Upper)	Miller Creek Upper-Pine Dr
29	Miller Creek (Middle)	Thumbs Butte Park
30	Miller Creek (Lower)	West St Parking
31	North Fork of Miller Creek (above Gail Gardner Way)	Corner of Lincoln & Grove
32	North Fork of Miller Creek (Gail Gardner Way - Peace Ln)	Yavapai County Building
33	North Fork of Miller Creek (Peace Ln - Miller Creek)	Street parking on Boulder Park Ave
34	Peavine Trail (South)	Street parking at N. End of trailer park
35	Peavine Trail (North)	Street parking on Sunset Ave
36	Watson Woods Riparian Preserve (South)	Street parking on Whipple St
37	Watson Woods Riparian Preserve (North)	Peavine Trailhead lot
38	Watson Lake (Inlet)	Peavine Trailhead lot
39	Watson Lake (East Shore)	Peavine Trailhead lot
40	Watson Lake (West Shore)	Peavine Trailhead lot
41	Watson Lake (North Boat Ramp)	Peavine Trailhead lot
42	Willow Lake (Upper)	Peavine Trailhead lot
43	Willow Lake (Middle)	Peavine Trailhead lot
44	Willow Lake (Inlet)	Peavine Trailhead lot
45	Willow Lake (Old Gravel Yard)	Peavine Trailhead lot
46	Willow Lake (South Shore)	Peavine Trailhead lot
47	Willow Lake (North Shore)	Peavine Trailhead lot
48	Willow Lake (Below Willow Lake in Granite Dells)	Peavine Trailhead lot
49		Peavine Trailhead lot
50		Peavine Trailhead lot